

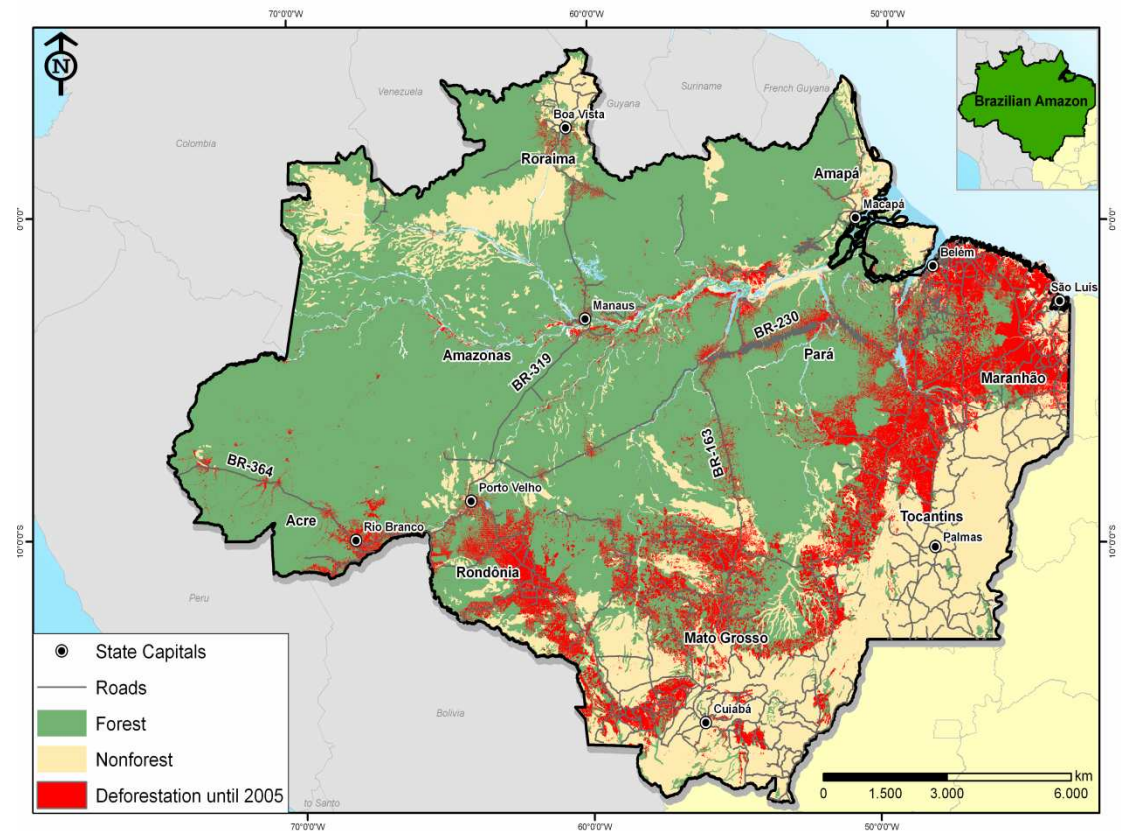


Enforcement of land use and forest regulations in the Brazilian Amazon

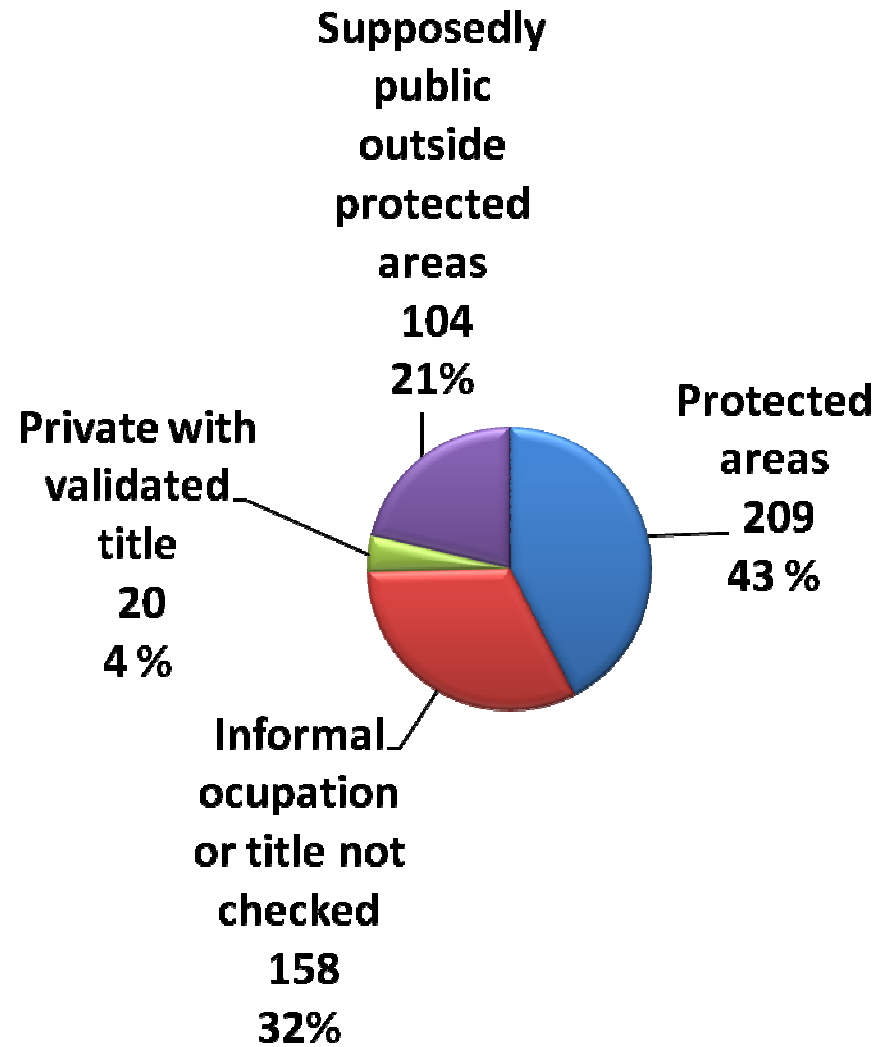
Paulo Barreto
IMAZON, Brazil
pbarreto@amazon.org.br

The Brazilian Amazon

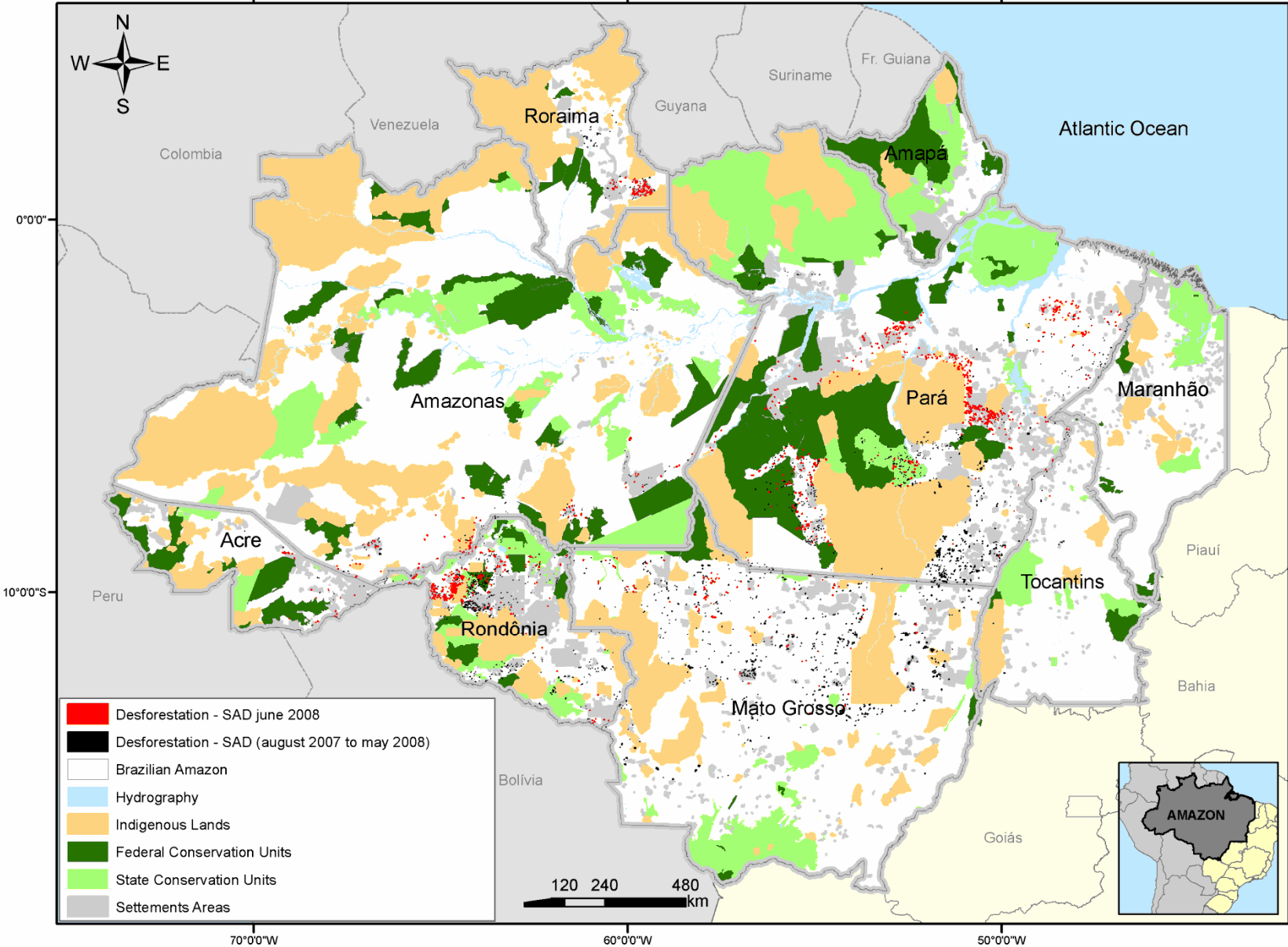
- ~ 23 million people
- 45% poor
- 18% deforested



Guesstimate of land tenure



Protected areas



Protected areas

Indigenous
lands

- Uses only by indigenous people

Conservation
Units

- Limited agriculture
- Sustainable extractive uses
- Tourism
- Research

Forest code: private areas

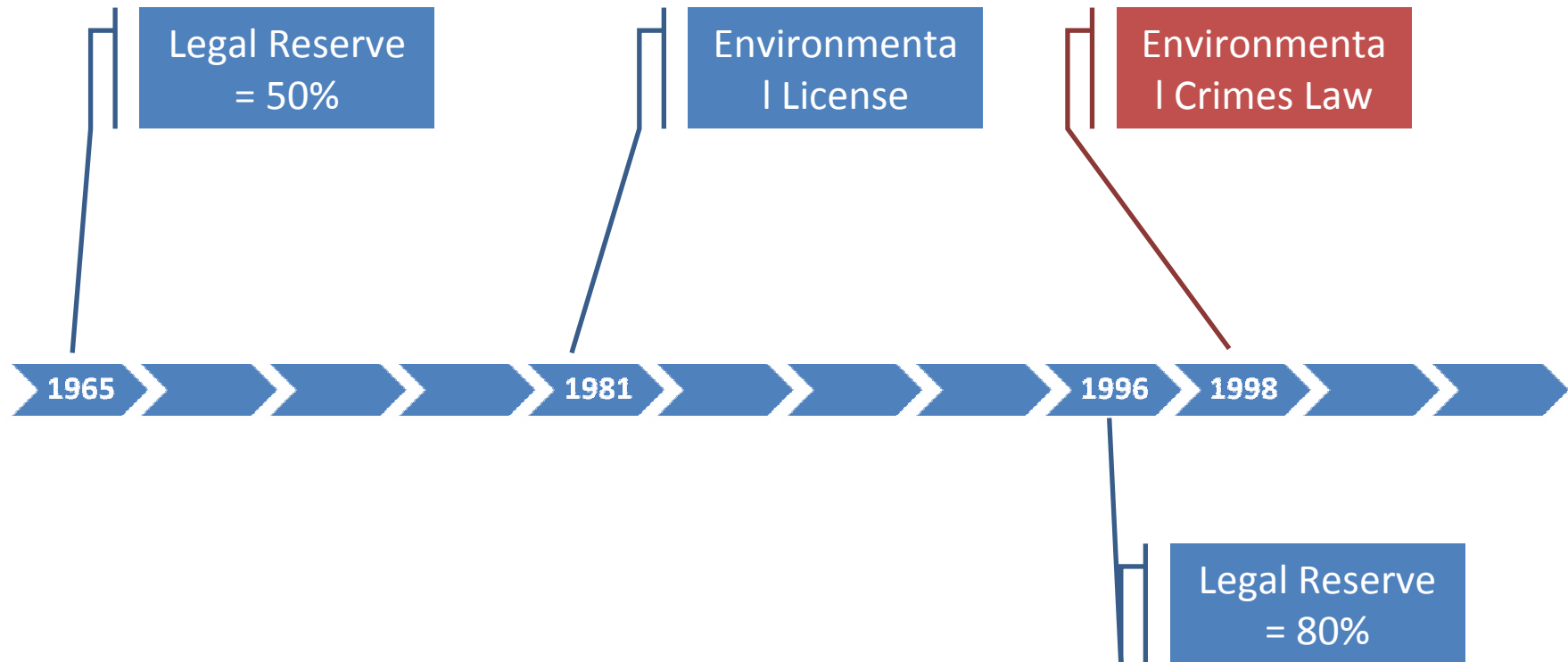
Legal Reserve
(sustainable use)
80% of each property

Permanent Protection Area
(Riparian Forest, > 45°
inclination terrain)

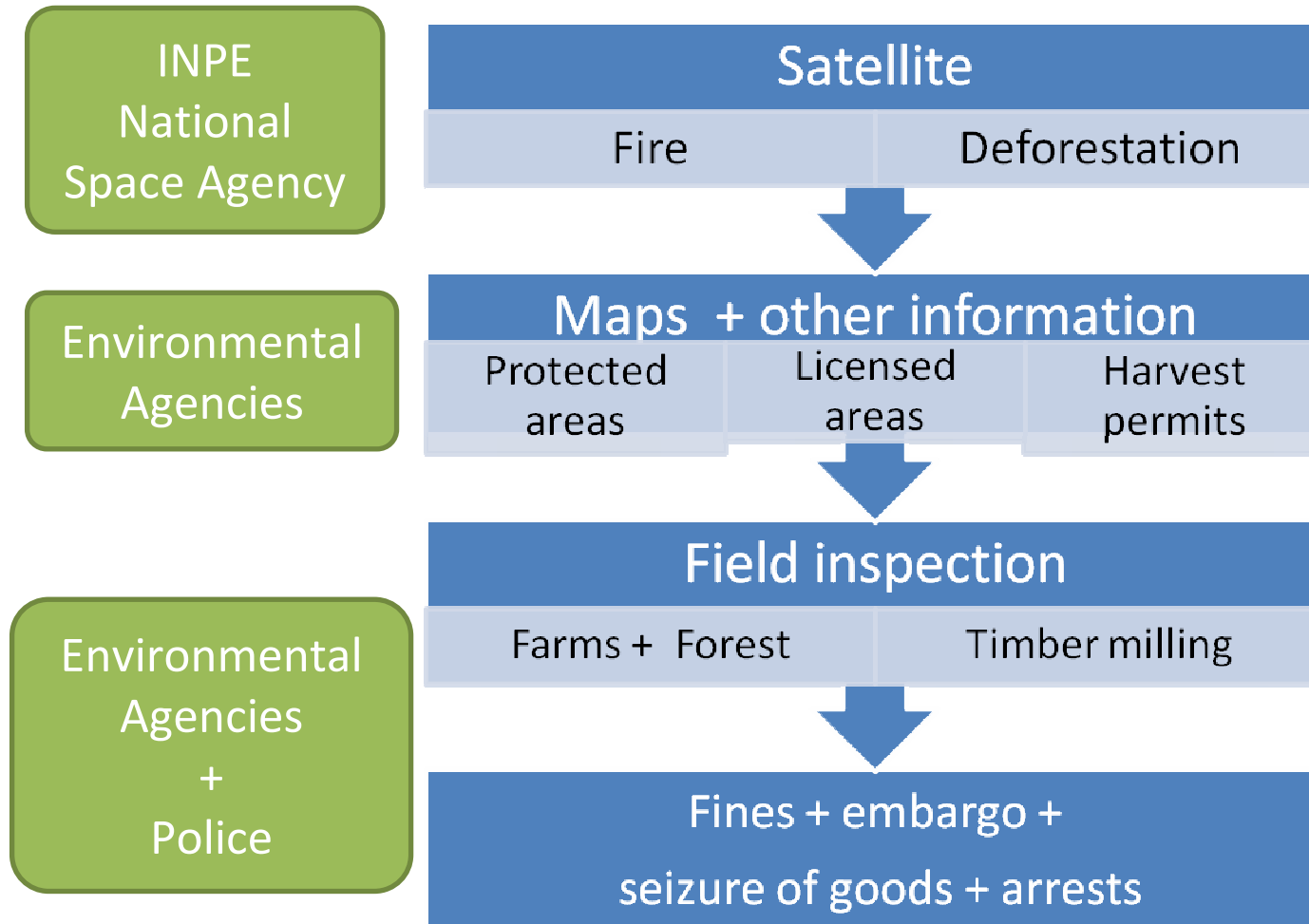
- Environmental licenses
- Transportation of logs is regulated and tracked



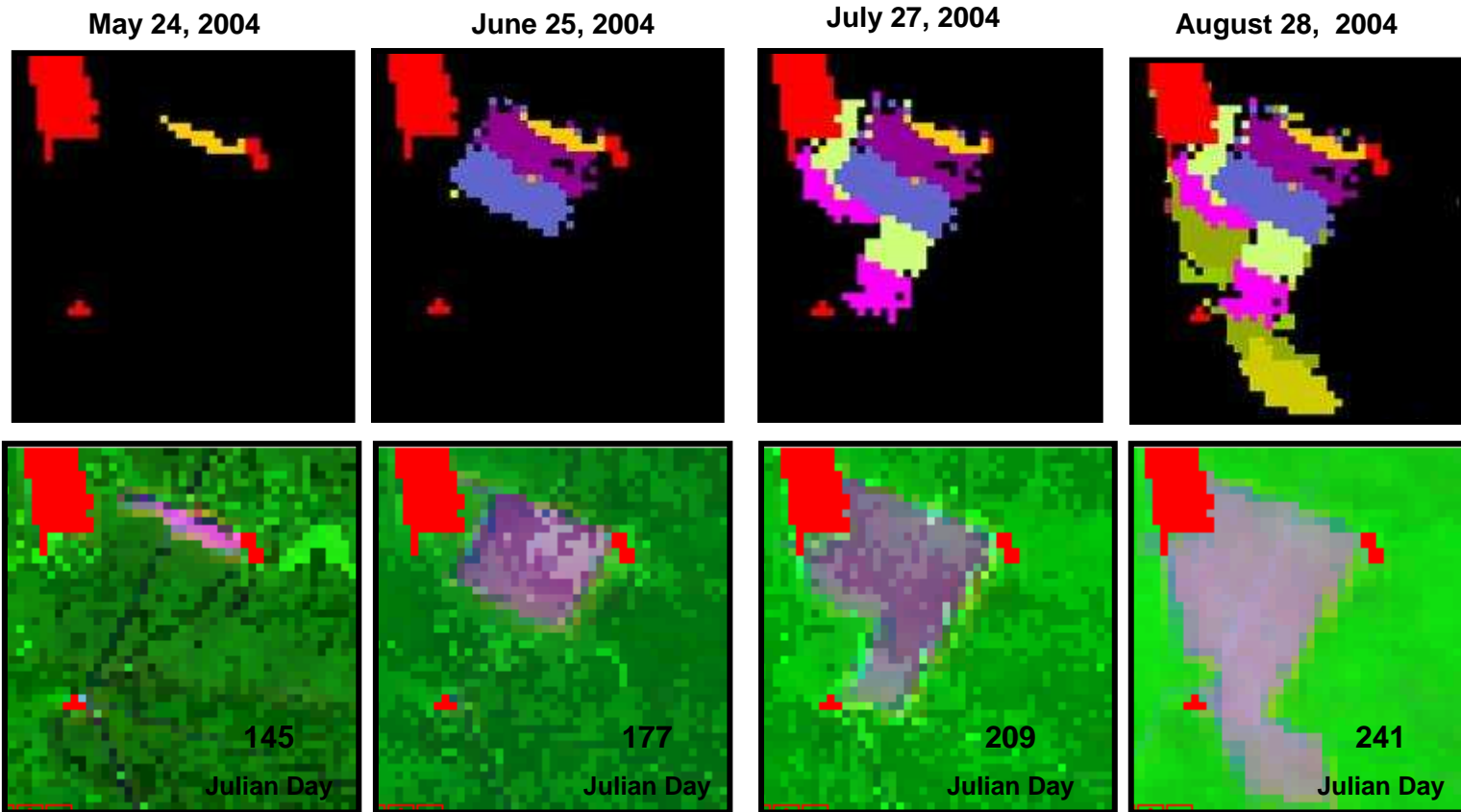
Environmental crimes law




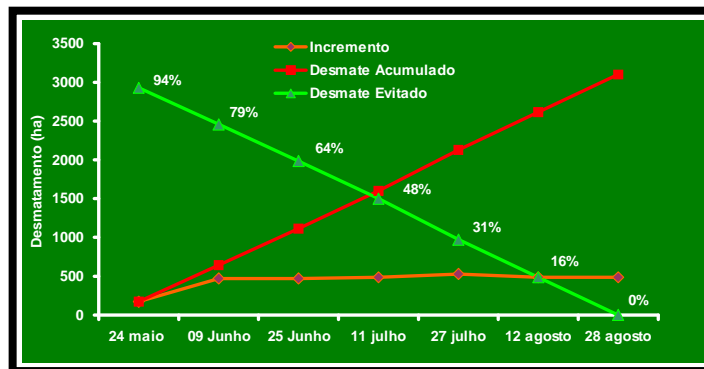
Detection of illegalities



Monthly deforestation data

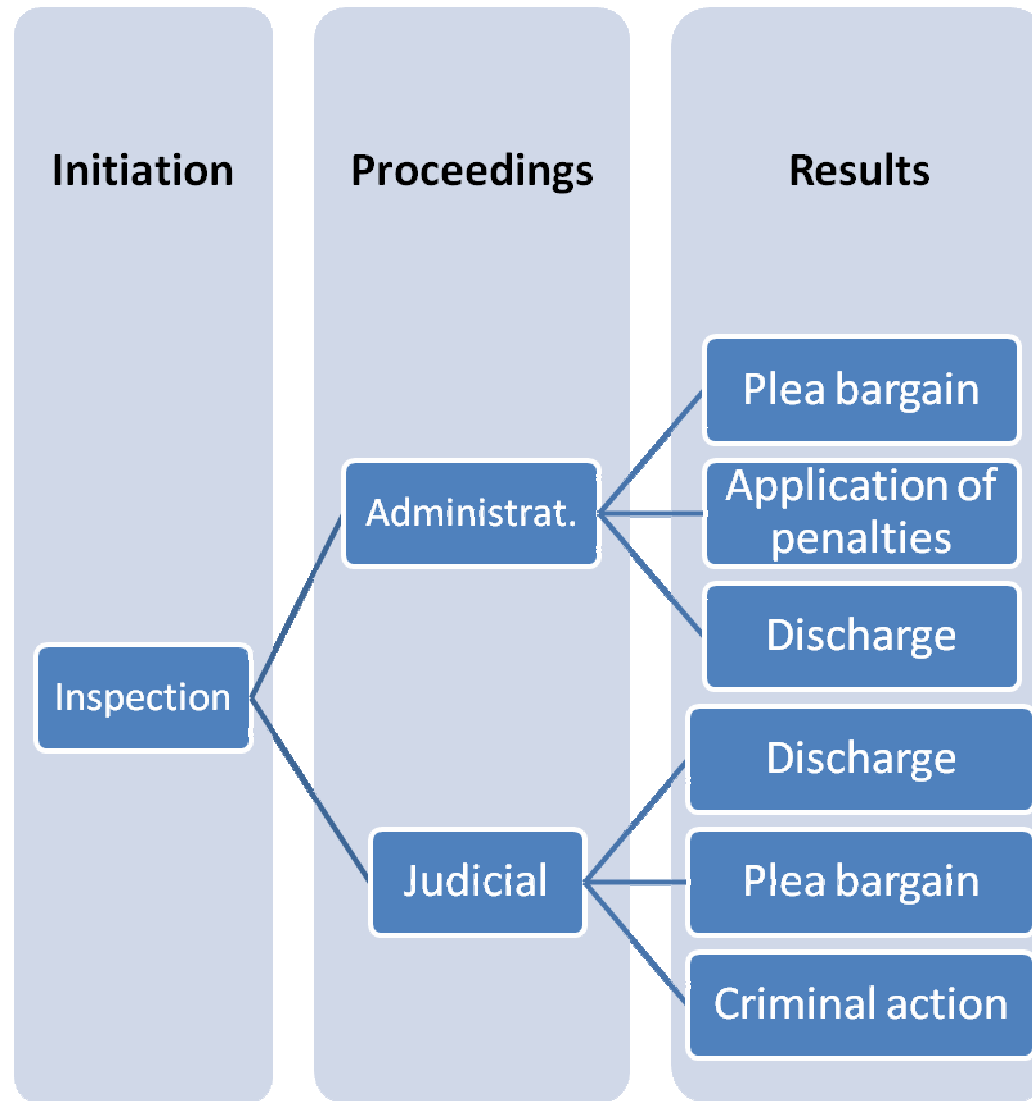


-  May 24, 2004
-  June 09, 2004
-  June 25, 2004
-  July 11, 2004
-  July 27, 2004
-  August 12, 2004
-  August 28, 2004

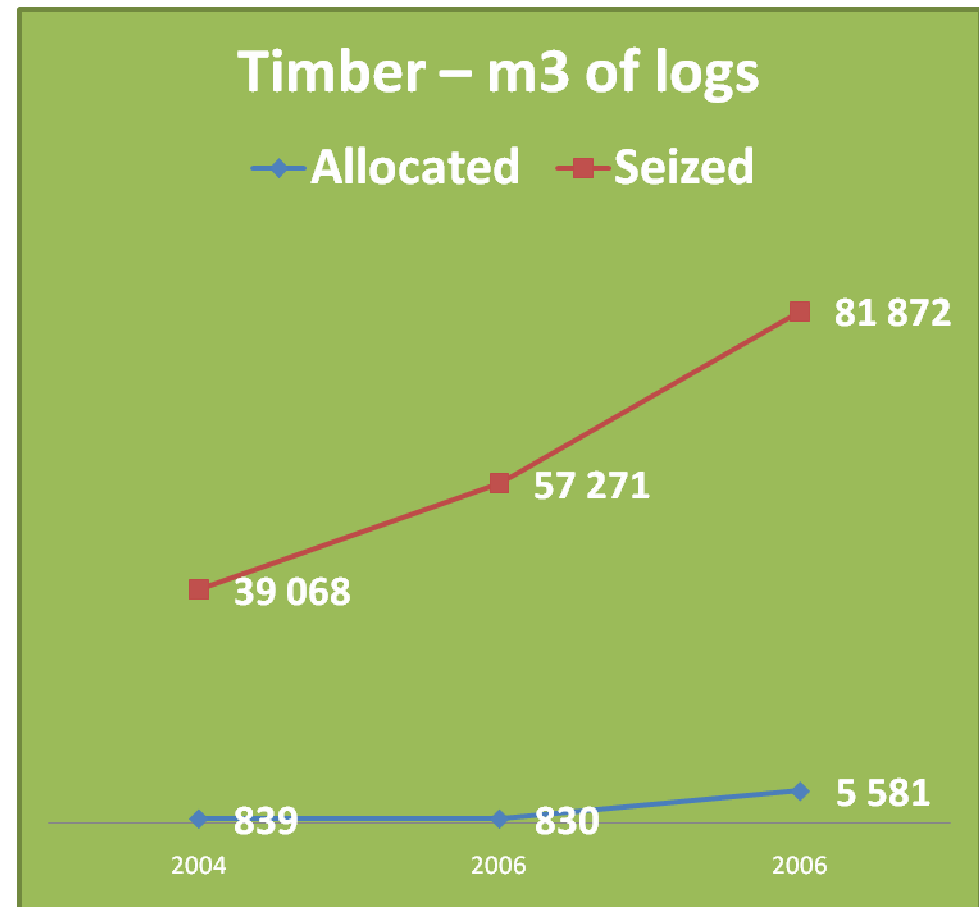
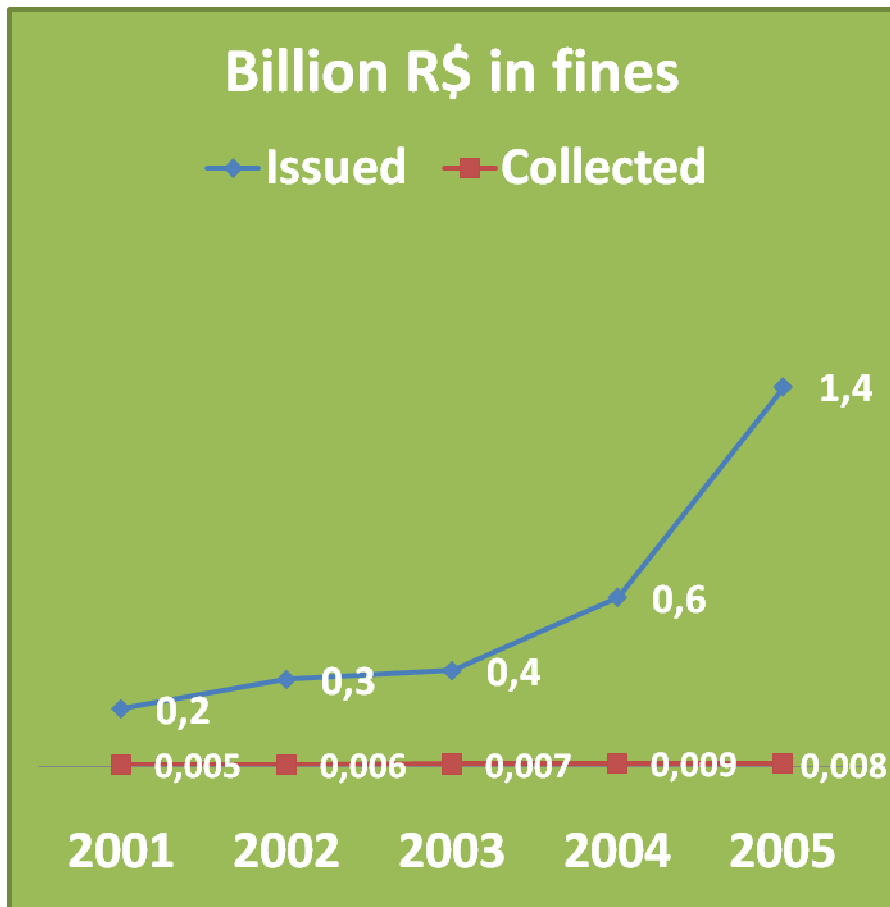


Total area = 3100 ha
Deforestation Rate = 30 ha/dia

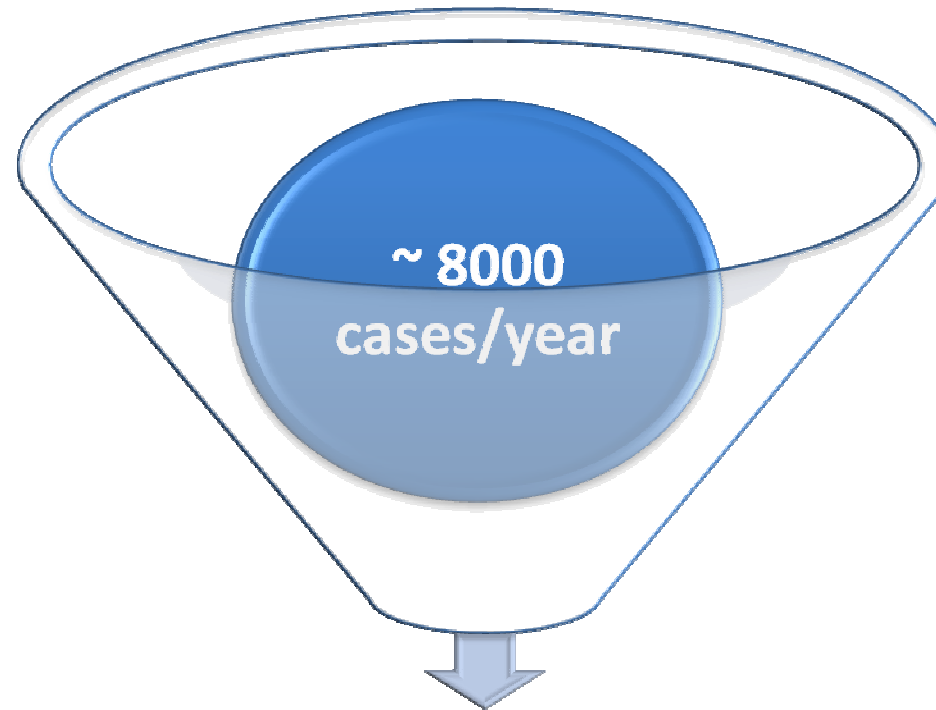
Proceedings for punishing environmental violators



Good and bad news about enforcement



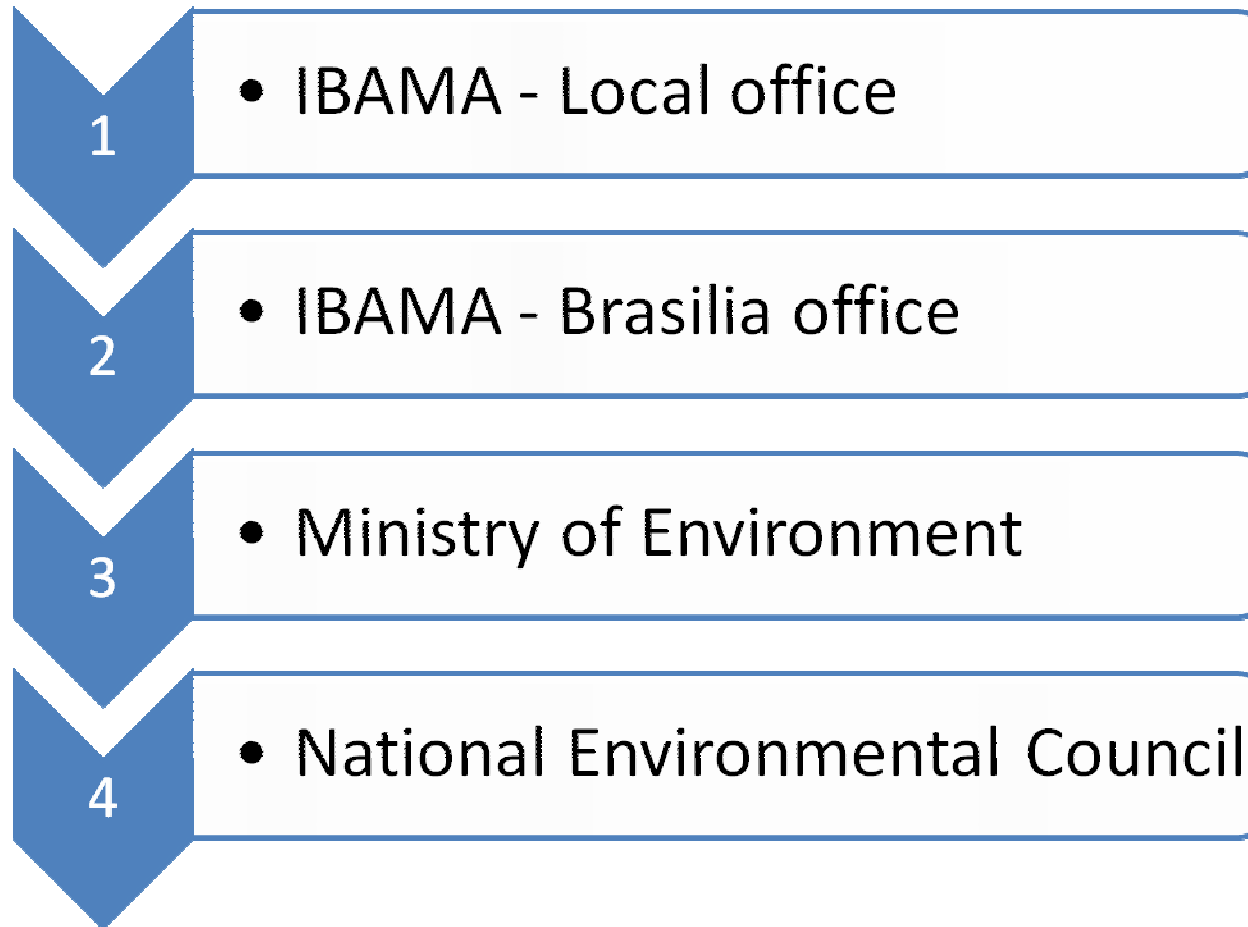
Poor enforcement strategy



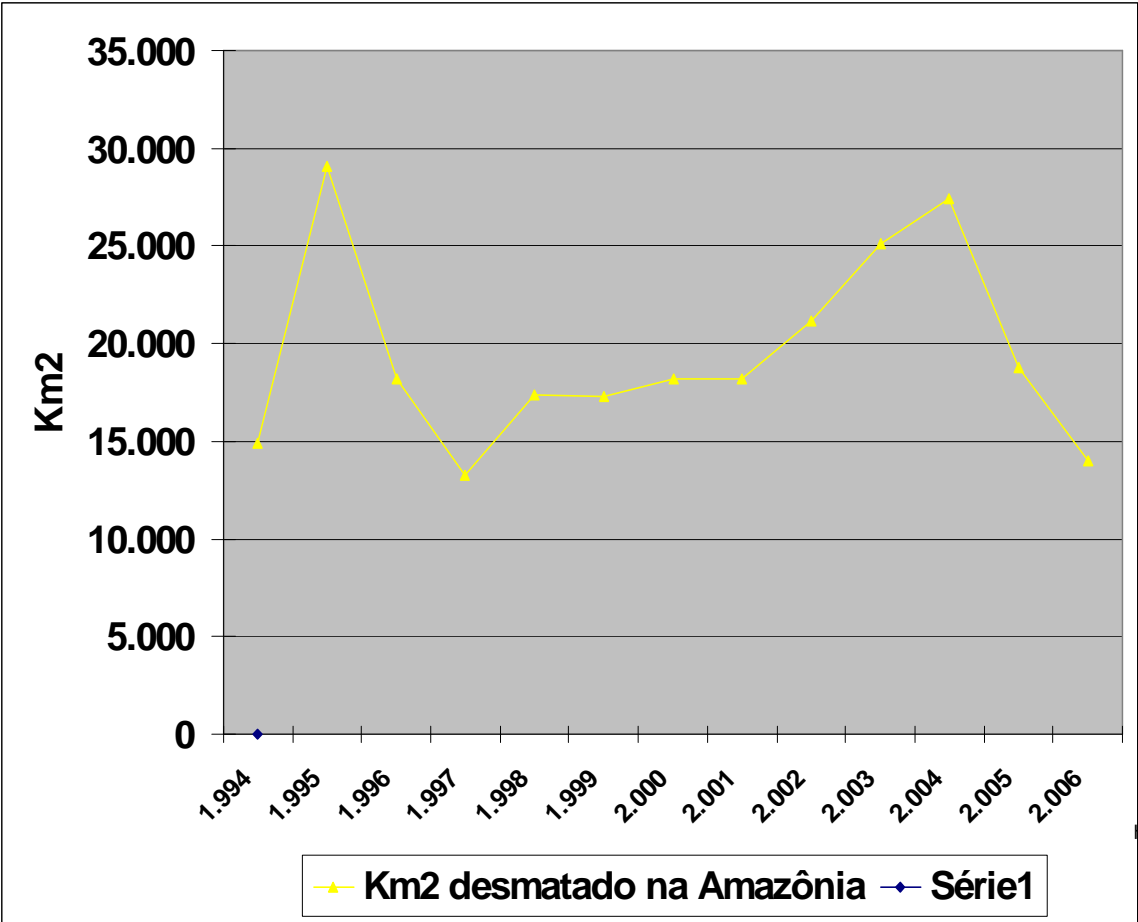
22

**IBAMA's lawyers
in the Amazon**

4 levels of administrative appeals

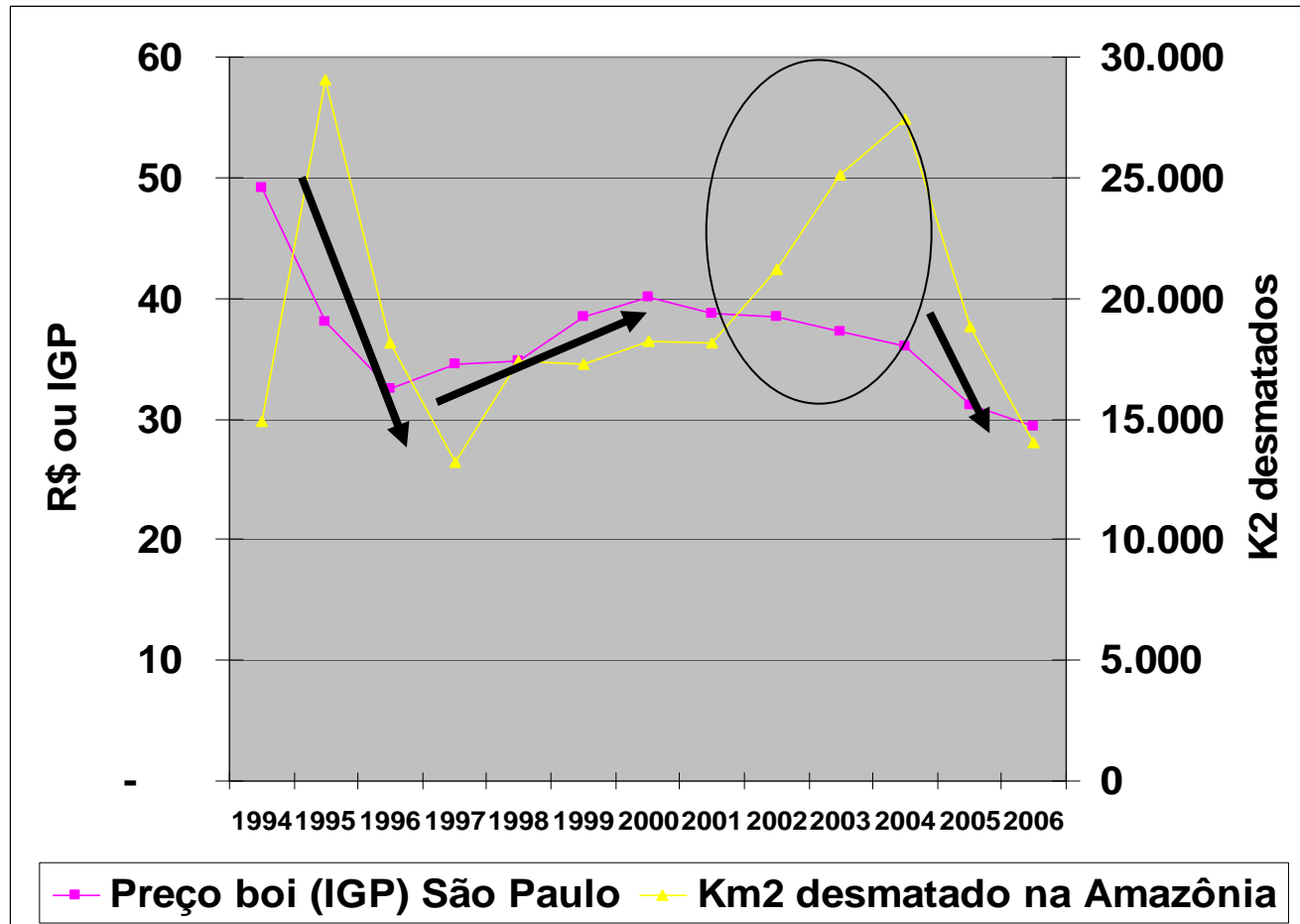


Deforestation rates from 1994 to 2006

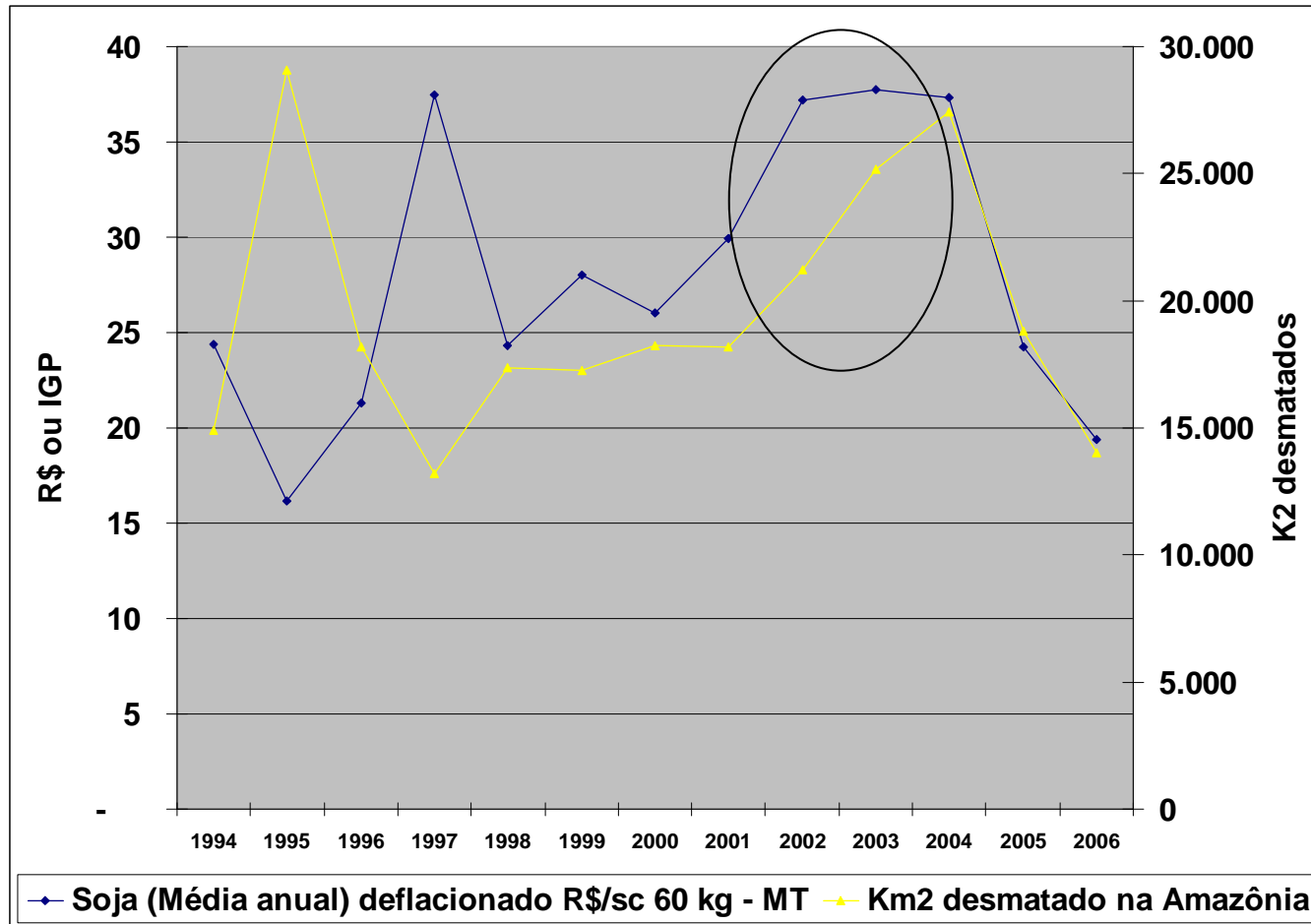


Fonte dados: Inpe
<http://www.obt.inpe.br/prodes/index.html>

Cattle price x Deforestation rate

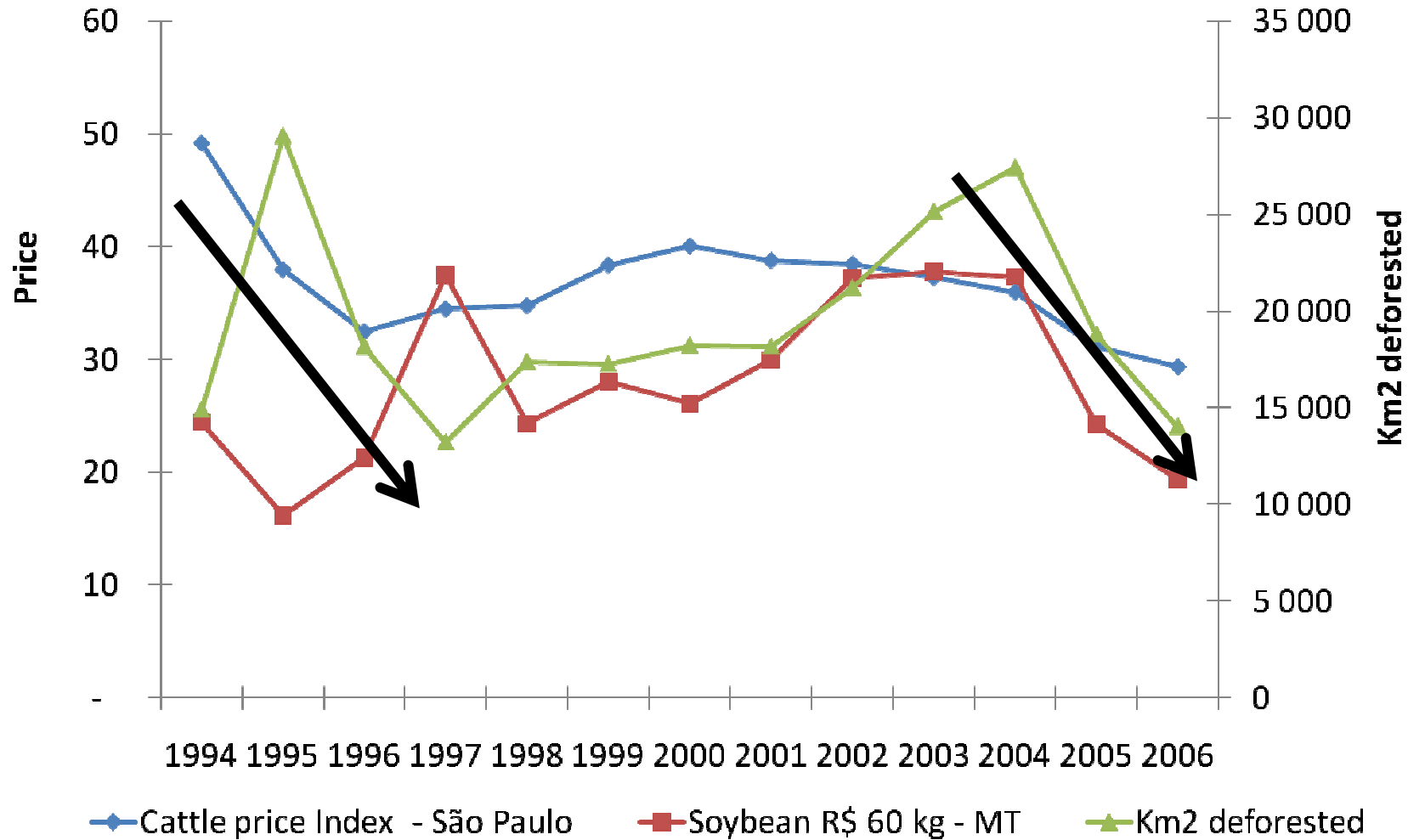


Soy price x Deforestation rate

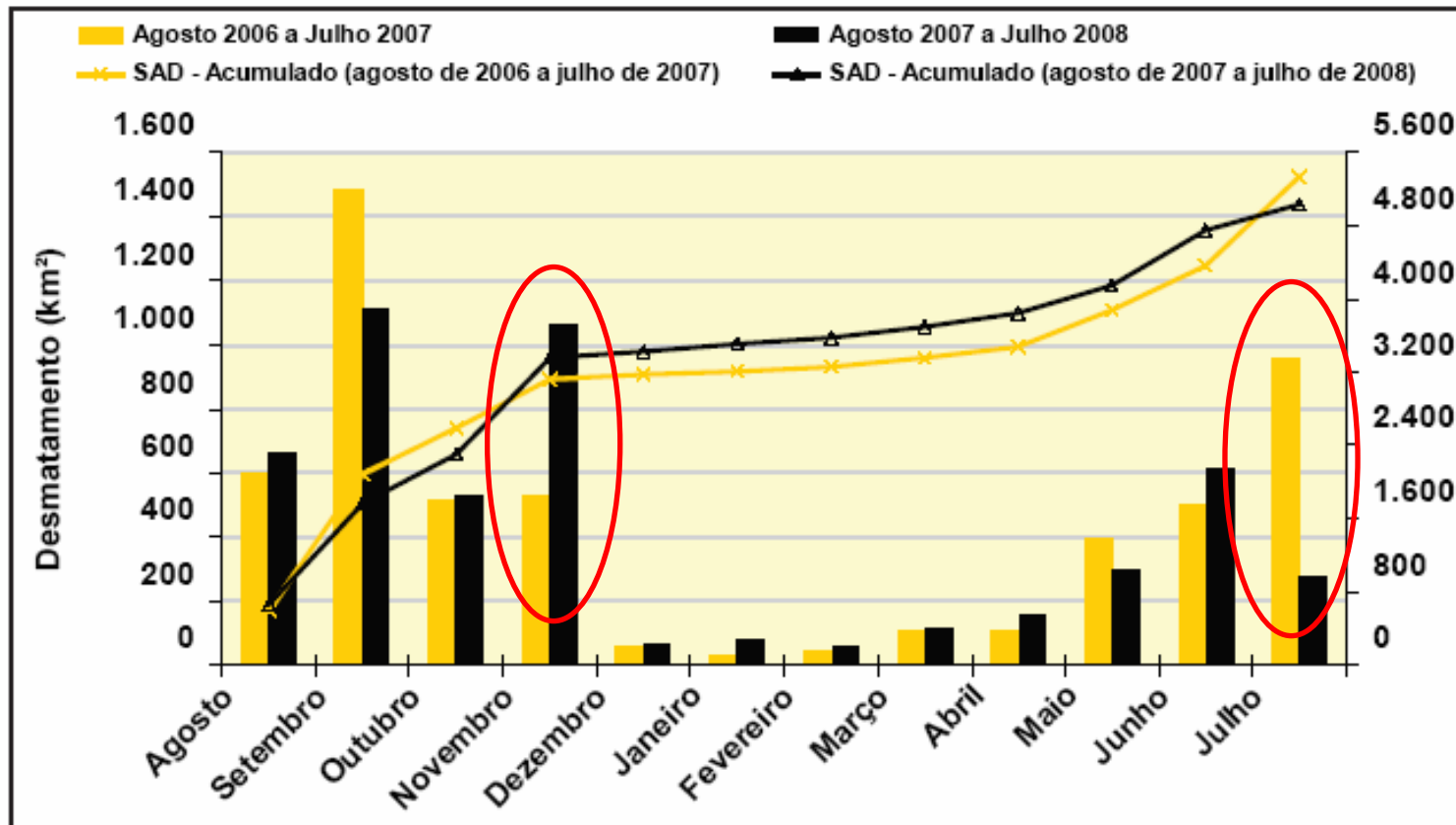


Dados preço soja: Anualpec vários anos. Fonte desmatamento: Inpe

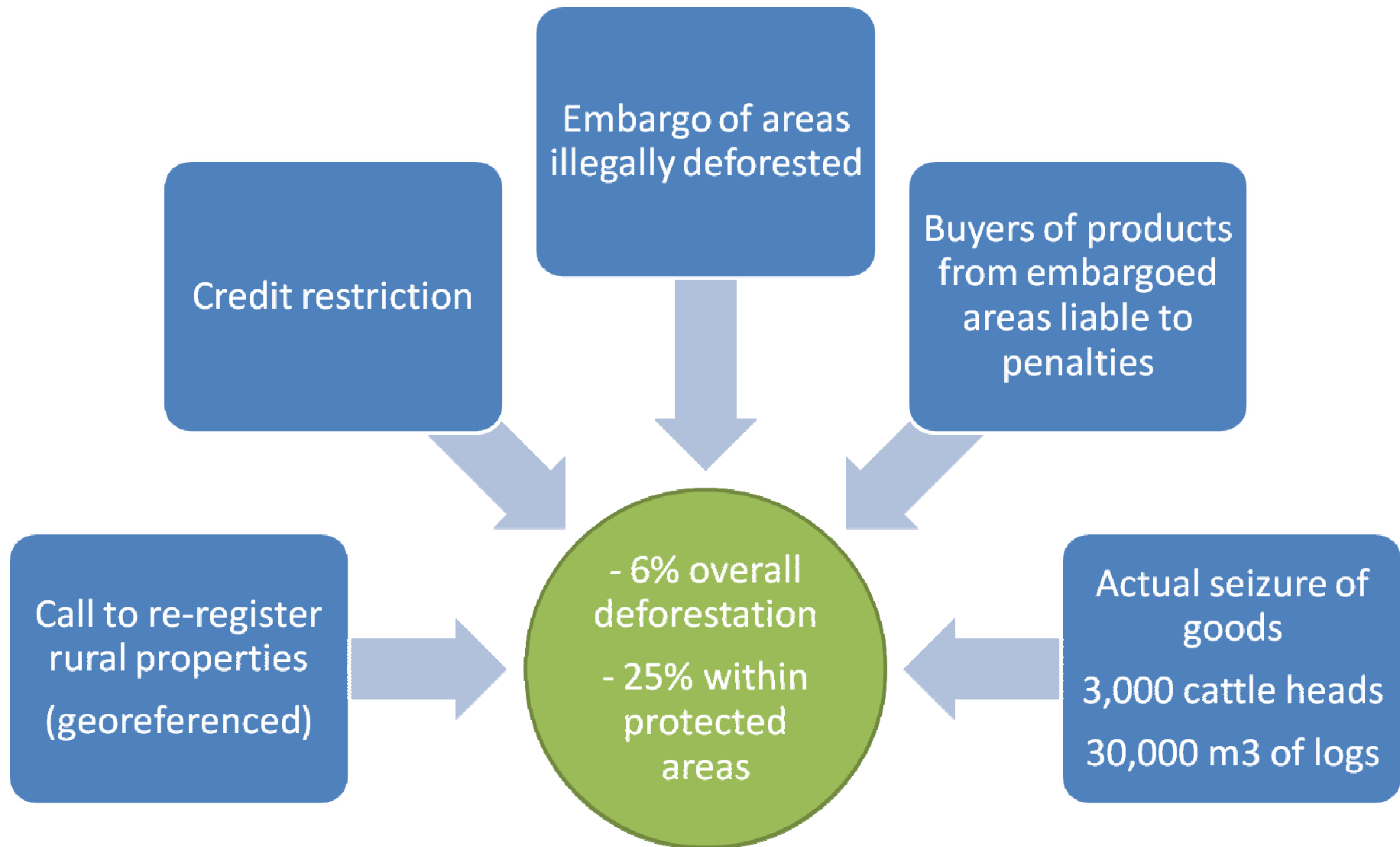
When beef and soy prices declined together deforestation declined sharply



Monthly deforestation data 2006-2007 x 2007-2008

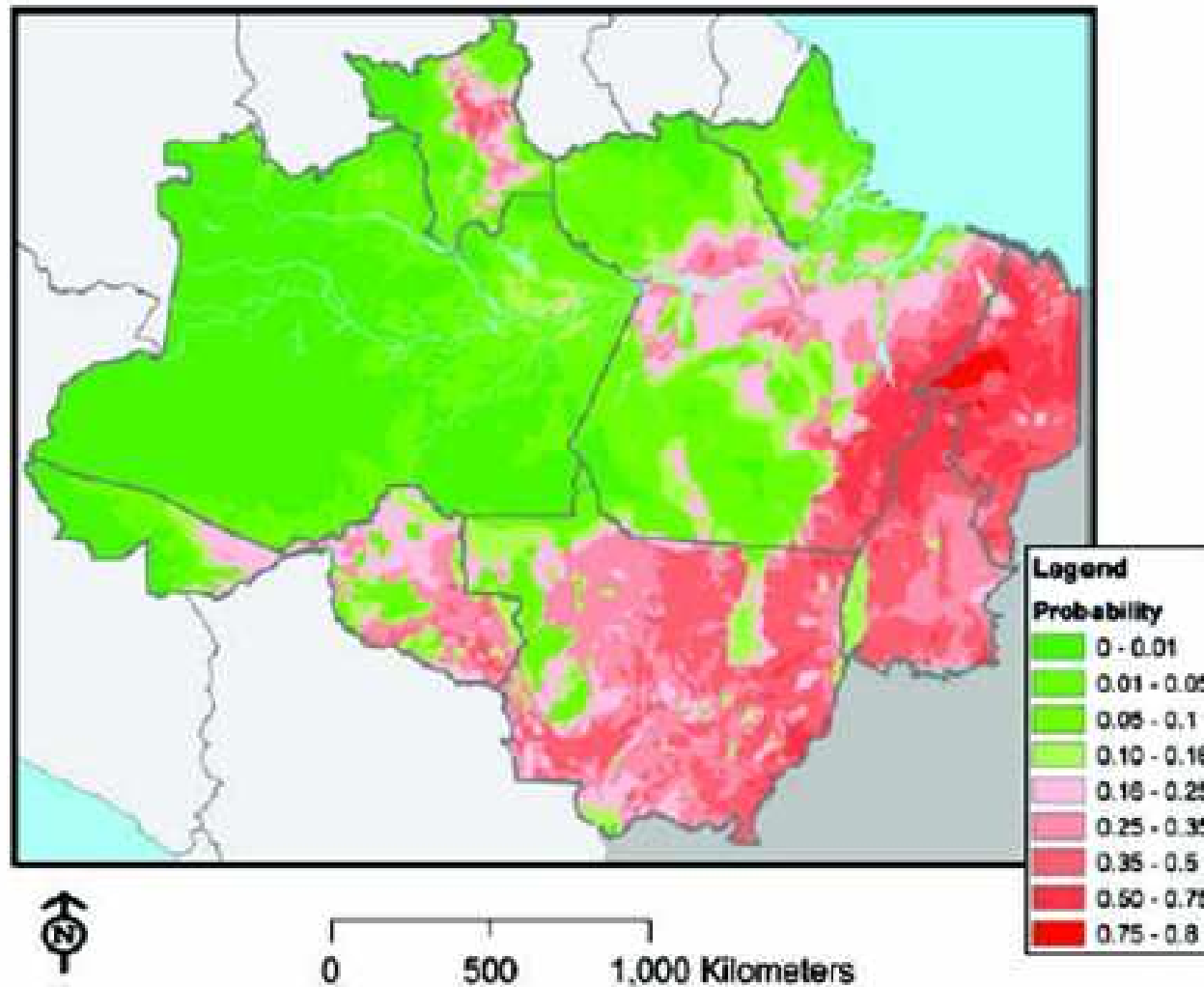


New measures against deforestation in 2008



The role of protected areas

33% reduction of fires, but timber extraction is a problem



Fonte: Arima et al.
2007

FIGURE 5: Estimated Probability of Fire in Amazonia—Base Case Scenario.

Reaction

Population against seizure of logs in Pará State – Feb 2008



Source of photo:
http://oglobo.globo.com/pais/mat/2008/02/20/madeireiros_presos_4_acusa_dos_de_incitar_protesto_no_para-425745872.asp

Congressional hearing about enforcement – April 2008

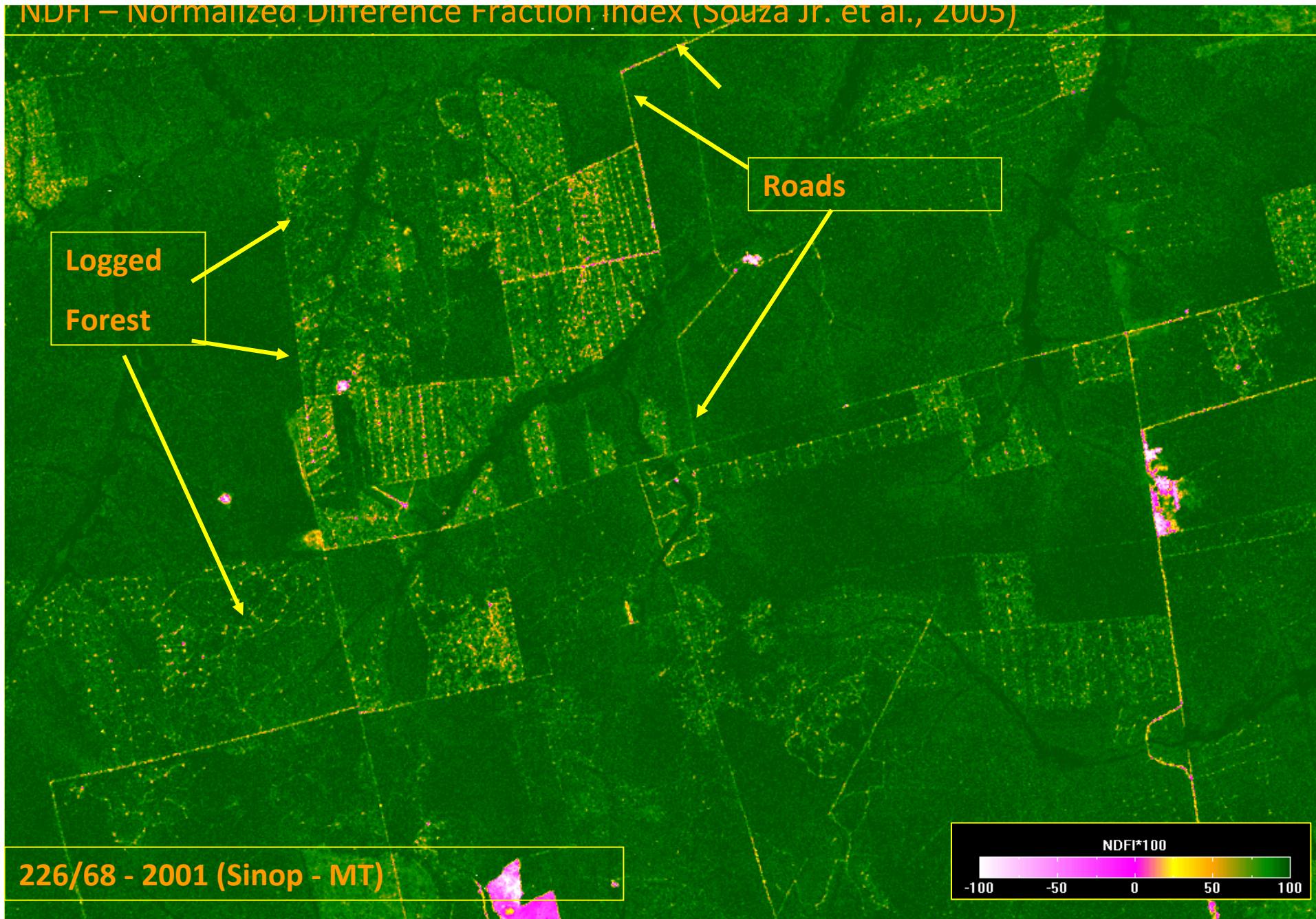


Source of photo:
http://www.meuparlamentar.com.br/homeropeira/images/rsgallery/original/04_09_10_desmatamento.JPG

Conclusions

1. Detection + application of penalties
2. Commodity prices → deforestation rates
3. Change economic incentives – ex: credit
4. Social and economic impacts of reducing illegal activities

NDFI – Normalized Difference Fraction Index (Souza Jr. et al., 2005)

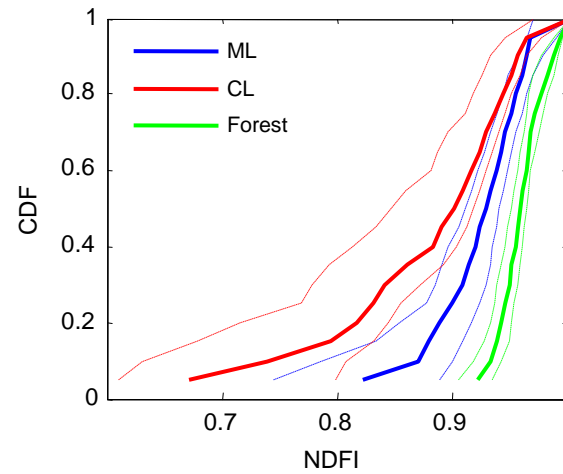


Forest Management Plan



Logging Damage Intensity

- Native forest
- Low impact logging
- Conventional logging



Detection of illegalities

